



Instructions for using Docklight with Russound Controller

Docklight is a easy to use program that will allow you to test the RS232 port on your Russound Controller to verify its proper operation.

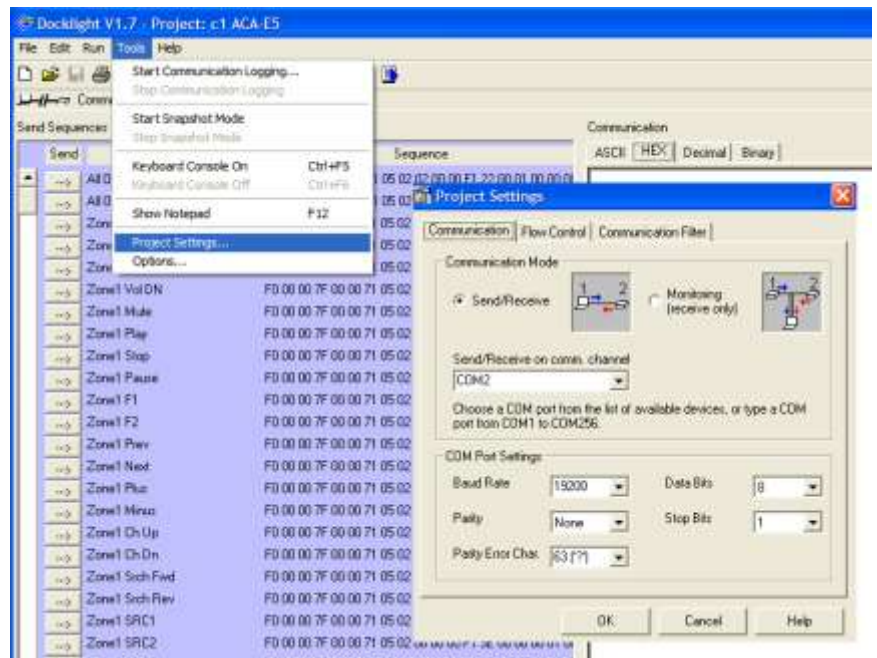
The strings included will work for all Russound controllers.

(Note separate all on's for E/C series vs. CAV/CAM/CAA/CAS/CA4)

Get the Docklight program from:

<http://www.docklight.de/download/Docklight.zip>

1. Load the template (File > Open; then browse to where you unzipped the .ptp to.
2. From the main Docklight menu, select *Tools > Project Settings* and set Set com port to match what port on your pc that you are using.
3. From the main Docklight menu, select *Run > Start Communication*



Now you should be able to send a string by clicking on the arrow button to the left of any of the strings found in the send sequences list. Your Russound Controller should respond accordingly.

If there is no response, check cabling and port settings. (Cable should be a straight thru)

Toll-Free Tech Line: 866-888-7466

tech@russound.com

Copyright ©2008 Russound. All rights reserved.

DD 09/16/08